

# STUDOR® MINI-VENT™

## Air Admittance Valve for Plumbing Ventilation

### Product Information/Specification Sheet

#### DESCRIPTION

The **STUDOR Mini-Vent** AAV is an accepted alternative to replace all forms of conventional branch and stack venting. With localised active ventilation of the building drainage system it is proven that the **Mini-Vent** provides greater protection to prevent induced and self-siphonage of the fixture traps.

The **Mini-Vent** opens and admits fresh air when the negative (suction) pressure occurs from a fixture discharging into the system. This equalizes the pressure within the system and protects the trap seal. When the flow stops, the **Mini-Vent** closes by gravity, preventing any transmission of foul air.

The **Mini-Vent** is used as an alternative to extending the vent pipes through the roof or sidewall.

#### FEATURES

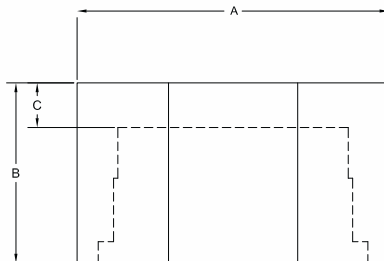
- Screening on the inside and outside of the **Mini-Vent** to protect the sealing membrane from foreign objects.
- Protective cover for the air intake and additional insulation against extreme temperatures.
- Ability to divert condensation away from the sealing membrane.
- Prevents the release of foul air from the drainage system.
- Available in white ABS.

#### INSTALLATION

- The **Mini-Vent** should be connected to the piping in accordance with **STUDOR's** installation instructions.
- Refer to your local area regulations for open vent requirements.

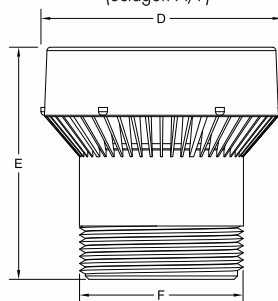
#### WARRANTY

The **STUDOR** products have a lifetime warranty - equivalent to that of the drainage system in which they are installed.

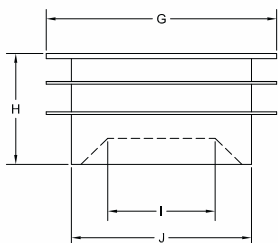


**Insulating Cap**

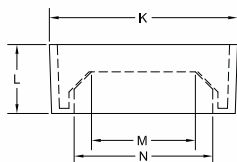
(octagon A/F)



**Mini-Vent**



**63mm Connector**



**32/40mm Connector**

Note: The components distributed with the Mini-Vent in North America, Canada and Mexico are not illustrated above.

#### PIPE SIZES

Europe	AU/NZ	USA
DN 32-50	DN 32-50	1 1/4" - 2"

#### DIMENSIONS

Dimension	Metric (mm)	Imperial (inches)
A	90	3.67
B	52	2.12
C	13	0.53
D	Ø70	Ø2.86
E	67	2.73
F	DN 40	1.50
G	Ø66	Ø2.69
H	32	1.31
I	Ø31	Ø1.27
J	Ø52	Ø2.12
K	Ø54	Ø2.20
L	20	0.82
M	Ø30	Ø1.22
N	Ø40	Ø1.63

Note: Dimensions for reference only

#### PERFORMANCE PARAMETER

Temperature range	-20°C to +60°C (CE) -40°F to +150°F (ASSE)
Opening pressure	-70 Pa (-0.010 PSI)
Max. pressure rating tightness	10,000 Pa (1m/40" H <sub>2</sub> O) at 0 Pa or higher

Air flow capacity	Branch	Stack
Europe	7.5 l/s	7.5 l/s
AU/NZ	7.5 l/s /60 FU	7.5 l/s /7 FU
USA	1 to 160 DFU	8 to 24 DFU

#### MATERIALS

Component	Material
Insulating cap	Polystyrene
Mini-Vent body	ABS
Mini-Vent membrane	Synthetic rubber
63mm connector	EPDM
32/40mm connector	Synthetic rubber

EN 12380	<b>CE</b>	<b>03</b>
Studor Ventech Limited, Millennium House, Victoria Road Douglas, Isle of Man IM2 4RW, British Isles		
Valve to ventilate drainage systems Designation: AI Airflow capacity: 7.5 l/s Airtightness tested at: 30/500/10000 Pa Range of temperature: -20°C to +60°C Effectiveness at temperatures below zero: -20°C Pipe material in accordance with: EN1329-1, EN1451-1, EN4514, EN12056-1		



Technical Support and Design Assistance:

Tel: +44 845 601 3292 Fax: +44 845 601 3293

Email: support@studor.net

www.studor.net



Also distributed under the following trade names:

**OsmaVent 40**  
**Mini-KNITS™**